

**THE UNITED REPUBLIC OF TANZANIA
NATIONAL EXAMINATIONS COUNCIL
ADVANCED CERTIFICATE OF SECONDARY EDUCATION
EXAMINATION**

113/1

Geography 1
(For School Candidates Only)

Time: 3 Hours

Tuesday, 08th February 2011 p.m.

INSTRUCTIONS

1. This paper consists of **thirteen (13)** questions in sections A and B.
2. Answer a total of **five (5)** questions; **two (2)** questions from section A and **three (3)** questions from section B. Question number **one (1)** is compulsory.
3. Question number **one (1)** carries 36 marks, the **rest** 16 marks each.
4. Credit will be given for the use of relevant sketch maps and diagrams.
5. Map extract for Question Number one (1) is included.
6. Non programmable calculators may be used.
7. Cellular phones are **not** allowed in the examination room.
8. Write your **Examination Number** on every page of your answer booklet(s).

maktaba.tetea.org



SECTION A (40 marks)

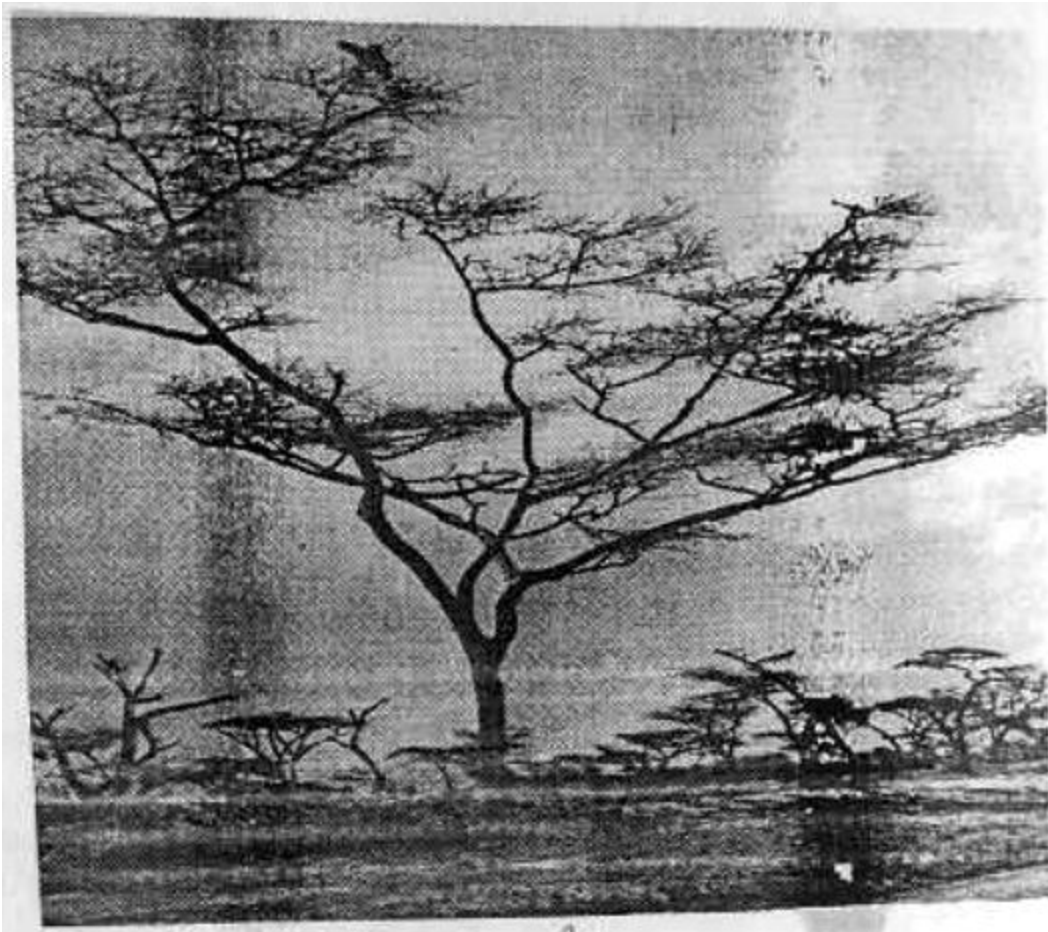
Answer question **number 1** and any other question from this section.

1. Study carefully the map extract of MASWA Sheet 49/2 provided and answer the questions that follow:
 - (a) Find the distance of the road in Km from grid reference 862486 to grid reference 867624.
 - (b) Describe the geomorphic processes which might have moulded the landforms in the area.
 - (c) What are the methods which have been used to represent relief in this map?
 - (d) With evidence suggest three (3) economic activities carried out in the area.
 - (e) Explain the site and function of Maswa town.
2. The following hypothetical data show the land use by percentage of the total area in six districts of Tanzania by 1975.

District	Area (‘000 km ²)	LAND USE (Percentage of total area 1995)			
		Arable	Pasture	Playground	Forest
Kilosa	250	50	25	05	20
Magu	180	35	35	18	12
Songea	120	70	-	25	05
Wete	60	80	02	10	08
Nkasi	20	65	10	20	05
Masasi	20	20	70	10	-

- (a) Present the data by Compound Divided Rectangles.
 - (b) What are the merits and demerits of the method in (a) above? (Write three merits and demerits).
3.
 - (a) What is a Plane table survey?
 - (b) Explain six (6) equipments used in Plane table survey.
 4. To what extent is research a scientific phenomenon?

5. Study the photograph provided below and answer the following questions.



- (a) Determine the type of vegetation shown in the photograph.
- (b) What economic activities can be undertaken in the area? (Identify three economic activities).
- (c) Explain the mechanisms adopted by the trees shown in the photograph which help them to survive in such environmental conditions.
- (d) Name any four possible districts in Tanzania where the photograph might have been taken.

SECTION B (60 marks)

Answer **three (3)** questions from this section.

6. With the aid of the diagram give an account of the erosional features associated with Alpine glaciation.
7. Using concrete examples explain how faulting has been responsible for landscape evolution.
8. Explain the formation of coral reefs and give their economic significance.
9. “Ocean currents are the outcome of the interaction of a number of factors.” Justify.
10. Give an account of the main factors which influence the infiltration of ground water.
11. Describe the characteristics of the tropical cyclones.
12. Write a detailed account on the characteristics and distribution of coniferous forests.
13. Gumbo is a modal village in Tanzania in implementing ‘Kilimo Kwanza’ policy. However there is a serious problem of soil erosion. Explain six (6) ways you will advise the villagers to control soil erosion.